

# Product data sheet

Specifications



## Telemecanique Capacitive proximity sensors XT, cylindrical Ø 32 mm, plastic, Sn 20 mm, cable 2 m

XT232A1FBL2

**Product availability : Stock - Normally stocked in distribution facility**

### Main

Range of Product	Telemecanique Capacitive proximity sensors XT
Sensor Type	Capacitive proximity sensor
Product Specific Application	Detection of insulated or conductive materials
Sensor name	XT2
Sensor design	Cylindrical Ø 32 mm plain
Size	80 mm
Body type	Fixed
Detector flush mounting acceptance	Non flush mountable
Material	Plastic
Enclosure Material	Plastic
Type of output signal	Discrete
Wiring Technique	2-wire
[Sn] nominal sensing distance	0.79 in (20 mm)
Discrete output function	1 NC
Output circuit type	AC
Electrical connection	Cable
Cable length	6.56 ft (2 m)
[Us] rated supply voltage	24...240 V AC 50...60 Hz
Maximum delay response	30 ms
IP degree of protection	IP67 double insulation conforming to IEC 60529

### Complementary

Detection face	Frontal
[Sa] assured operating distance	0.00...0.59 in (0...15 mm)
Adjustment zone	0.00...0.87 in (0...22 mm)
Differential travel	< 1...20 % Sr
Repeat accuracy	< 5 % Sr
Wire insulation material	PVC

Status LED	Output state indication 1 LED yellow)
Supply voltage limits	20...265 V AC
Switching frequency	<= 15 Hz
Maximum voltage drop	<10 V closed)
Current consumption	< 4 mA
Maximum delay first up	200 ms
Maximum delay recovery	30 ms
Maximum switching current	300 mA
Marking	CE
Setting-up	Sensitivity by potentiometer
Length	3.15 in (80 mm)
Net Weight	0.88 lb(US) (0.4 kg)

## Environment

Standards	EN/IEC 60947-5-2
Product Certifications	cULus
Ambient air temperature for operation	14...140 °F (-10...60 °C)
Vibration resistance	10 gn 1 mm 10...55 Hz)IEC 60068-2-6
Shock resistance	30 gn 11 ms IEC 60068-2-27
Resistance to electrostatic discharge	4 kV contact IEC 61000-4-2 8 kV air IEC 61000-4-2
Resistance to electromagnetic fields	2.74 V/m (3 V/m) IEC 61000-4-3
Resistance to fast transients	2 kV IEC 61000-4-4

## Ordering and shipping details

Category	22490-SENSORS-ULTRASONIC (XX5,6)
Discount Schedule	DS2
GTIN	3389119025966
Returnability	No
Country of origin	CN

## Packing Units

Unit Type of Package 1	PCE
Number of Units in Package 1	1
Package 1 Height	1.57 in (4.0 cm)
Package 1 Width	5.12 in (13.0 cm)
Package 1 Length	5.51 in (14.0 cm)
Package 1 Weight	7.41 oz (210.0 g)
Unit Type of Package 2	S02
Number of Units in Package 2	25
Package 2 Height	5.91 in (15.0 cm)
Package 2 Width	11.81 in (30.0 cm)
Package 2 Length	15.75 in (40.0 cm)

---

<b>Package 2 Weight</b>	12.49 lb(US) (5.664 kg)
-------------------------	-------------------------

## Offer Sustainability

---

<b>California proposition 65</b>	WARNING: This product can expose you to chemicals including: Diisononyl phthalate (DINP), which is known to the State of California to cause cancer, and Di-isodecyl phthalate (DIDP), which is known to the State of California to cause birth defects or other reproductive harm. For more information go to <a href="http://www.P65Warnings.ca.gov">www.P65Warnings.ca.gov</a>
----------------------------------	---

---

<b>REACH Regulation</b>	<a href="#">REACH Declaration</a>
-------------------------	-----------------------------------

---

<b>REACH free of SVHC</b>	Yes
---------------------------	-----

---

<b>EU RoHS Directive</b>	Pro-active compliance (Product out of EU RoHS legal scope) <a href="#">EU RoHS Declaration</a>
--------------------------	---

---

<b>Toxic heavy metal free</b>	Yes
-------------------------------	-----

---

<b>Mercury free</b>	Yes
---------------------	-----

---

<b>RoHS exemption information</b>	<a href="#">Yes</a>
-----------------------------------	---------------------

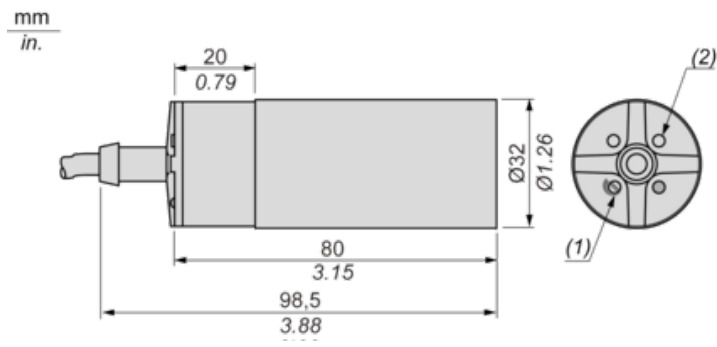
---

## Contractual warranty

---

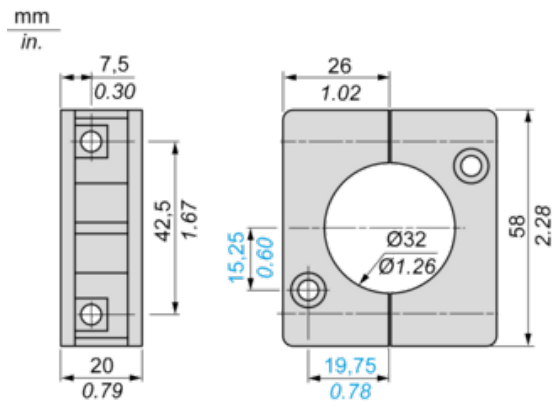
<b>Warranty</b>	18 months
-----------------	-----------

Dimensions



- (1) Adjustment potentiometer
- (2) LED

Mounting Accessory Included

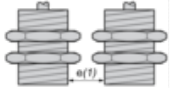


**Setting-up**

---

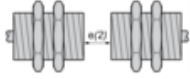
**Minimum Mounting Distances (mm)**

Side by side



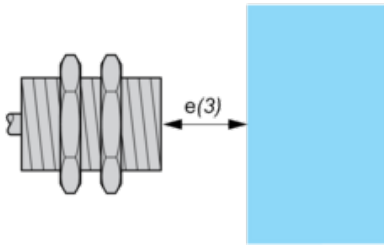
$e(1) \geq 65$

Face to face



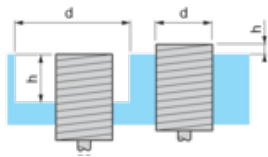
$e(2) \geq 120$

Facing a metal object



$e(3) \geq 60$

Mounted in support



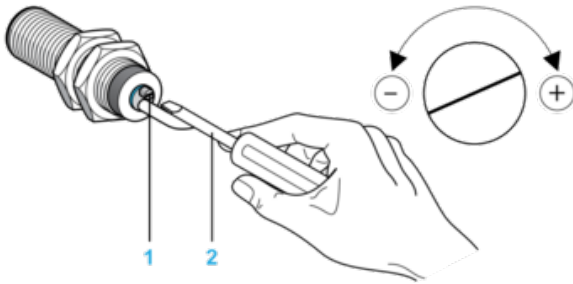
$d \geq 100$

$h \geq 30$

**Adjustment**

---

**Sensitivity Adjustment**

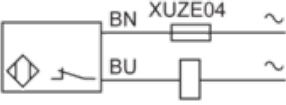


- (1) Adjustment potentiometer
- (2) Screwdriver (included with sensor)

**Wiring Diagram**

---

**Pre-cabled**  
2-wire AC NC Output



(BU) Blue  
(BN) Brown

**Recommended replacement(s)**